

# Adjustable Throttle and Throttle Check Valves, Model : TT/TCT



the right connection  
the right environment

Ref. No : H03364 Release March 2018 (Dimensions in mm)

## Description

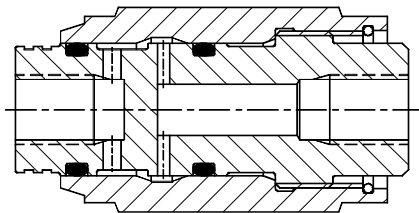
Non pressure and viscosity compensated valves.

Model TT Throttle valves allow adjustable throttled flow in both the directions.

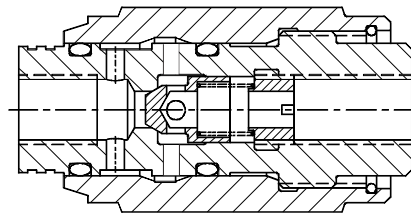
Model TCT Throttle check valve gives adjustable flow in one direction and allows free flow in opposite direction.



## Section



TT



TCT

Hydraulic Symbol

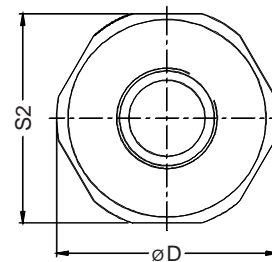
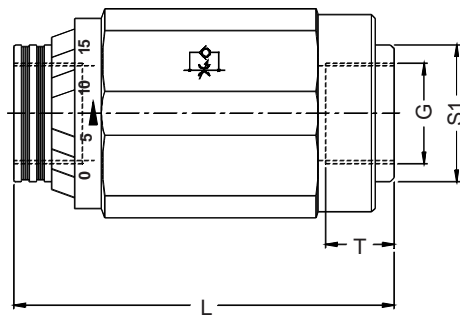
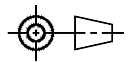


TT



TCT

## Unit Dimensions



| Ordering Code |           | G      | T  | S1 | S2 | L   | ØD |
|---------------|-----------|--------|----|----|----|-----|----|
| TCTG02-2.0    | TTG02-2.0 | G 1/4  | 12 | 19 | 32 | 65  | 34 |
| TCTG03-2.0    | TTG03-2.0 | G 3/8  | 13 | 26 | 36 | 65  | 38 |
| TCTG04-2.0    | TTG04-2.0 | G 1/2  | 14 | 27 | 46 | 80  | 49 |
| TCTG06-2.0    | TTG06-2.0 | G 3/4  | 18 | 37 | 55 | 100 | 58 |
| TCTG08-2.0    | TTG08-2.0 | G1     | 18 | 41 | 70 | 110 | 74 |
| TCTG10-2.0    | TTG10-2.0 | G1.1/4 | 22 | 58 | 85 | 130 | 87 |
| TCTG12-2.0    | TTG12-2.0 | G1.1/2 | 22 | 60 | 90 | 150 | 94 |

# Adjustable Throttle and Throttle Check Valves, Model : TT/TCT



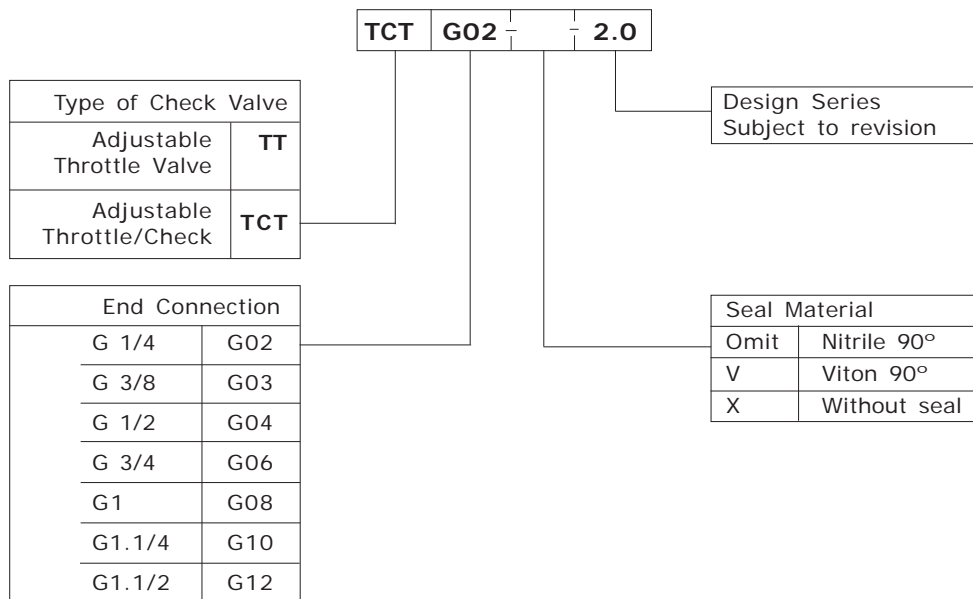
the right connection  
the right environment

Ref. No : H03364 Release March 2018 (Dimensions in mm)

## Technical Specifications

|  |  |
|--|--|
| Construction . . . . .                   | Inline threaded body with rotating sleeve for flow adjustment. Non pressure and viscosity compensated.   |
| Mounting style . . . . .                 | Inline, threaded body  |
| Mounting position . . . . .              | Optional   |
| Flow direction . . . . .                 | For model <b>TCT</b> : Free flow in one direction.<br>Adjustable throttled flow in opposite direction as indicated on the valve body.<br>For model <b>TT</b> : Adjustable throttled flow in both the directions                        |
| Operating pressure . . . . .             | 315 bar.   |
| Hydraulic medium . . . . .               | Mineral oil.   |
| Viscosity range . . . . .                | 10 cSt to 380 cSt.   |
| Fluid temperature range . . . . .        | -20 °C to +70 °C   |
| Maximum flow handling capacity . . . . . | TCTG02/TTG02                      25 l/min<br>TCTG03/TTG03<br>TCTG04/TTG04                      50 l/min<br>TCTG06/TTG06<br>TCTG08/TTG08                      200 l/min<br>TCTG10/TTG10<br>TCTG12/TTG12                      400 l/min |

## Ordering Code



Note : Add prefix 316 to the existing part code for SS 316 valves. e.g. **316-TCTG02-2.0**